

Image Guidance



Our technology has been engineered to handle many different image anomalies, however, the following guidance will give your images the highest possible accuracy.



www.tabscanner.com

```
{
  message: "SUCCESS: Result available",
  status: "done",
  status_code: 3,
  result: {
    establishment: "Costco",
    validatedEstablishment: true,
    date: "2019-02-08 14:38:00",
    total: "196.150",
    url: "https://www.costco.com/warehouse-locat",
    phoneNumber: "(512) 382-3013",
    paymentMethod: "",
    address: "Store#641, 4301 W William Cannon D",
    cash: "0.000",
    change: "0.000",
    validatedTotal: true,
    subTotal: "196.150",
    validatedSubTotal: true,
    tax: "0.000",
    taxes: [
      0
    ],
    discount: "0.000",
    rounding: "0.000",
    discounts: [],
    lineItems: [
      {
        qty: 0,
        desc: "1150189 ORG SKINYROP",
        unit: "",
        price: "0.000",
        discount: "0.000",
        descClean: "ORG SKINYROP",
```



Hold camera still to avoid blurred images.



Do not crumple receipts after shopping and ensure that receipt is flattened out.



Ensure entire receipt is in the image and that no key areas are cut off.



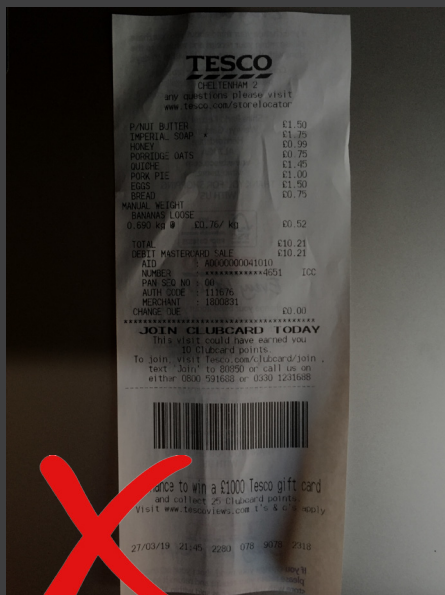
Place receipt on a flat surface and do not take hand held photos.



Avoid writing on receipt or any pen markings across it.



Ensure the image is not over exposed.



Avoid shadows and take photograph in even lighting conditions.



A well exposed flat image with all key areas clearly framed within the image.



IMAGE GUIDANCE

Partner With The World's Most Advanced
Receipt Technology

Middle East
905 Prime Tower,
Business Bay,
Dubai, United Arab
Emirates

America
3300 Bee Cave Rd Suite
1202# 650
Austin, Texas
78746

Europe
160-158 Ashley Rd, Hale,
Altrincham
WA9 1SSF,
UK

Asia Pacific
2F Miya Building
Shirokane 15-13-3
Minato-ku Tokyo -108
0072